

4

3

2

1

Section Properties	Area Moment of Inertia (in^4)
18" Dia 3/8" Steel Pipe Pile	415
Pilecap 18" Repair Jacket	2000



PILECAPINC.COM
913.948.8340

D

D

C

C

B

B

A

A

PILEBOND

GROUT FILLED FAIRING AT
EXISTING PILE SPLICE

20 ft

STEEL PILE
18" OD, 3/8" WALL,
WITH OR WITHOUT
CONCRETE FILL

FOR JOINT DETAIL, SEE PAGE 2

Pilecoat Jacket Coating

- Polyurea, polibrid, coal tar or similar coating by SSPC QP-3 certified coater
- High preformance corrosion protection
- Applied to jacket in controlled enviroment

Jacket Overview

- 1/2 A572 G50 USA STEEL
- Jacket fully clamps around existing open pile cross section
- Jacket Ixx and Iyy value of 2000 is 5x that of existing steel pile
- Dry doc readiness improved via wind load allowables
- Jackets available in bare steel or coated in polyurea, polibrid or similar
- Jackets bonded to pile with Pilebond 690, underwater epoxy, applied topside
- ISO certified jacket fabrication with full materials and welding certs
- State and job specific SE stamped analysis included

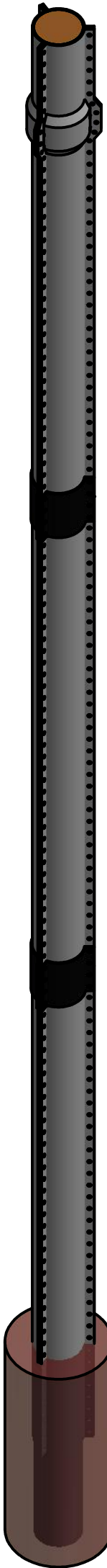
Pilebond

- Two-part underwater epoxy
- Fully encapsulates existing pile
- Prevents further corrosion of existing pile
- Bonds jacket to existing pile
- Applied topside to inside of jacket just prior to diver installation

Jacket Installation

- Piles cleaned within 5 days of repair jacket installation
- Jackets longer than 20ft are typically installed in sections
- Jackets longer than 20ft may be assembled on site, topside, or under water, as required
- Pilebond underwater epoxy applied topside to inside of jacket just prior to diver installation
- Rigging via upper and lower welded pad eyes
- Torque bolts with calibrated impact wrench

20 ft LONG JACKET APPROX. WEIGHT: 760 lbs
(PER 1/3 SECTION)



Mudline

60 FOOT JACKET ON 18" PILE

US PATENT #6561736

4

3

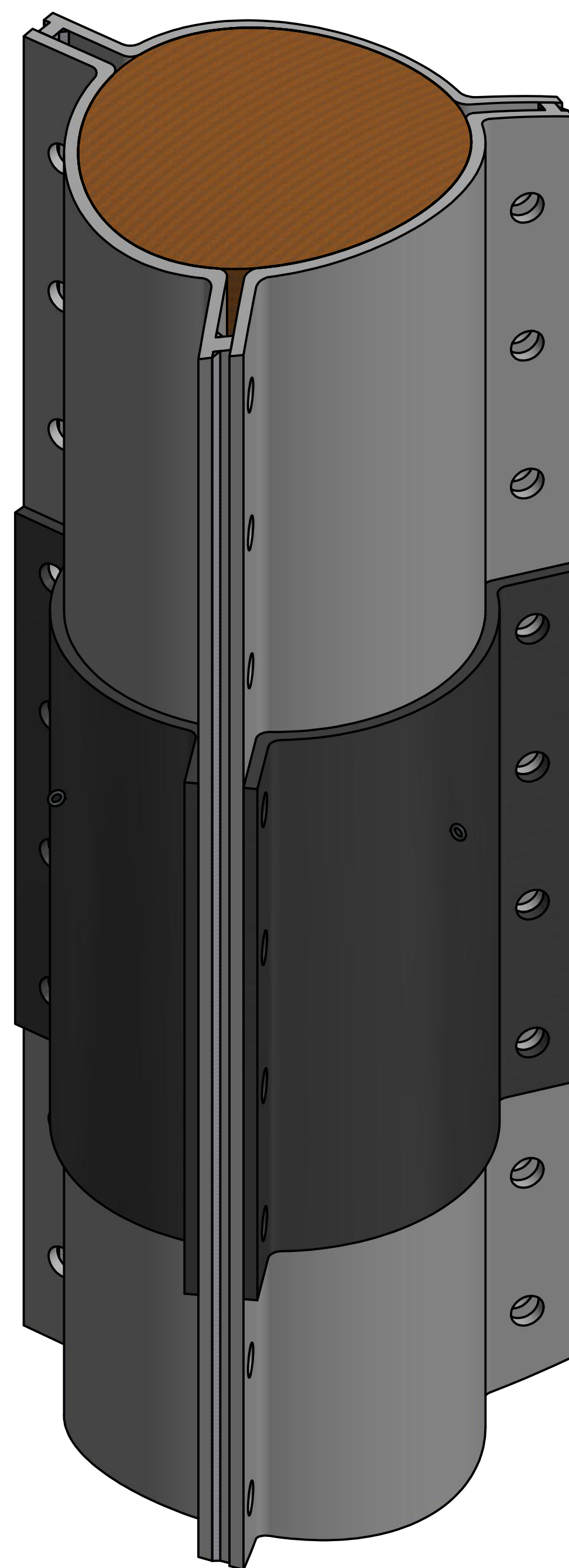
4

2

1



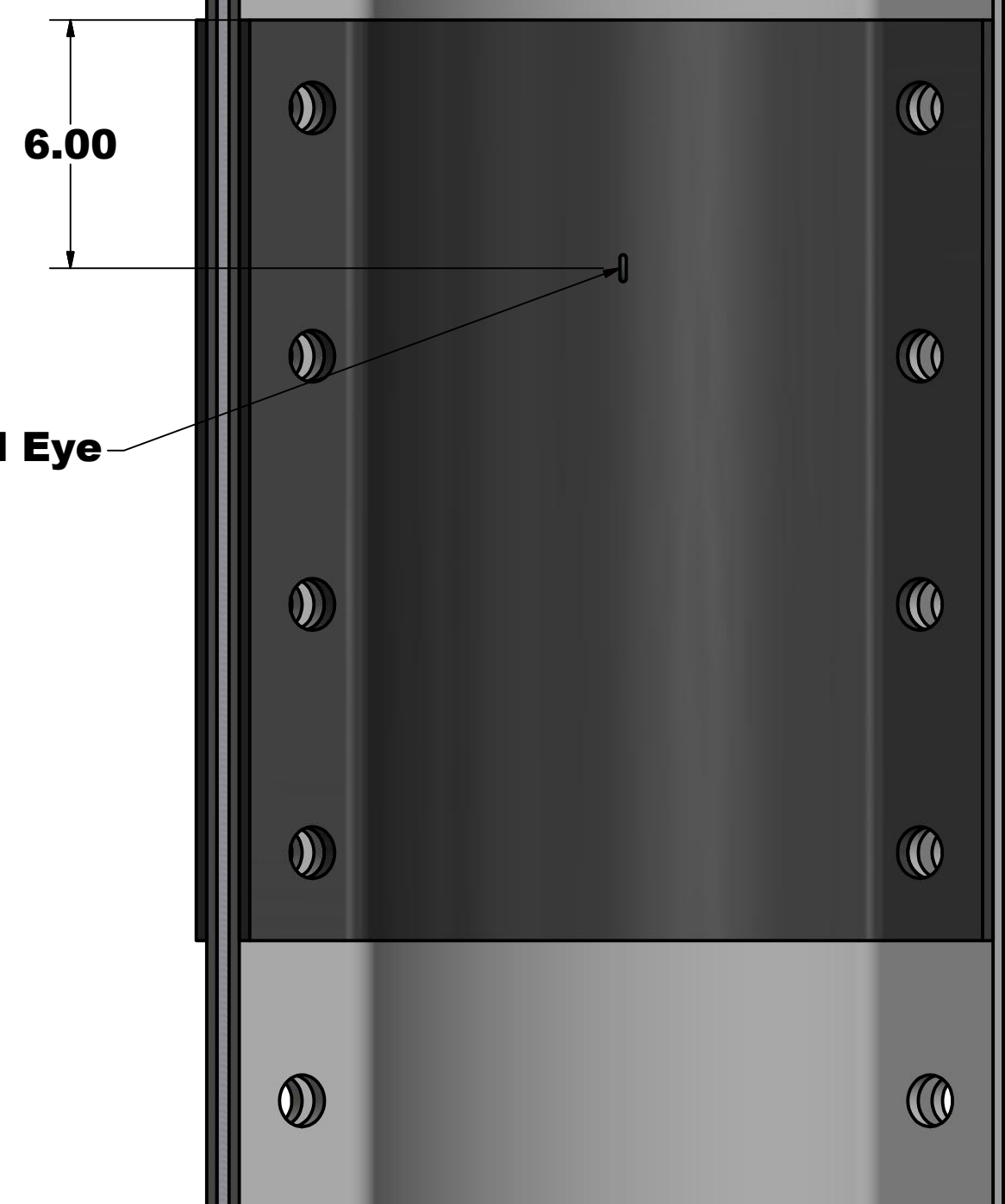
PILECAPINC.COM
913.948.8340



UPPER JACKET SECTION
(20 ft LENGTH)

UNION PLATE

LOWER JACKET SECTION
(20 ft LENGTH)



6.00

Welded Pad Eye

JACKET UNION

US PATENT #6561736

PILECAPINC.COM ALL DIMENSIONS IN INCHES MATERIAL: REVISION DATE: 7/30/2015 PROPRIETARY AND CONFIDENTIAL

4

3

2

1

Section Properties	Area Moment of Inertia (in^4)
18" Dia 3/8" Steel Pipe Pile	415
Pilecap 18" Repair Jacket	2000



PILECAPINC.COM
913.948.8340

HDG A563 NUT

2X F436 HDG WASHER

HDG A325 BOLT

EXISTING 18" DIA
3/8" STEEL PIPE PILE

1/2" A572G50

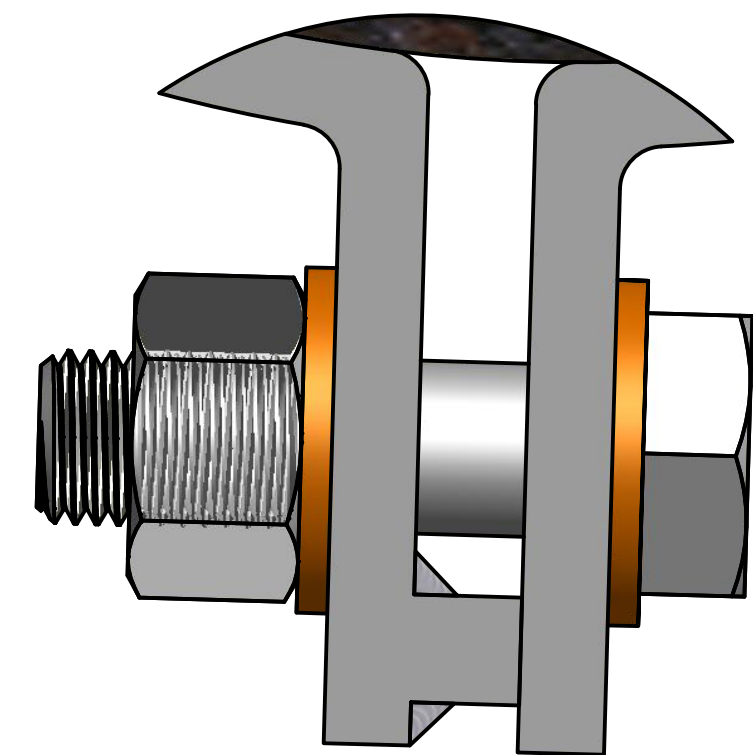
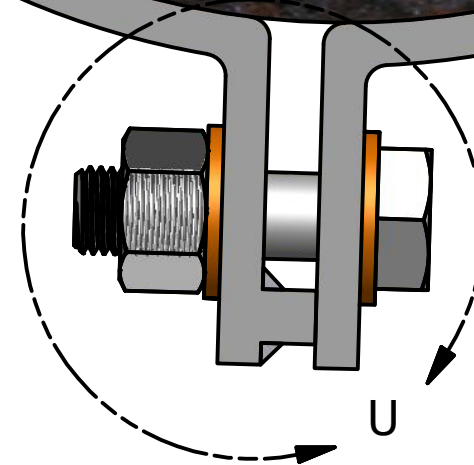
FASTENING HARDWARE SUMMARY

**1"-8 X 3.5" HDG A 325 HEX BOLT
WITH HEAVY HEX NUT (A563)**

BOLTS TORQUED TO 1600 ft-lbs

**2 X 1" HDG F436 FLAT WASHER PER
BOLT**

**270 HEX BOLTS, 540 WASHERS, 270
NUTS PER PILE**



DETAIL U

ASSEMBLED JACKET CROSS SECTION

US PATENT #6561736

4

3

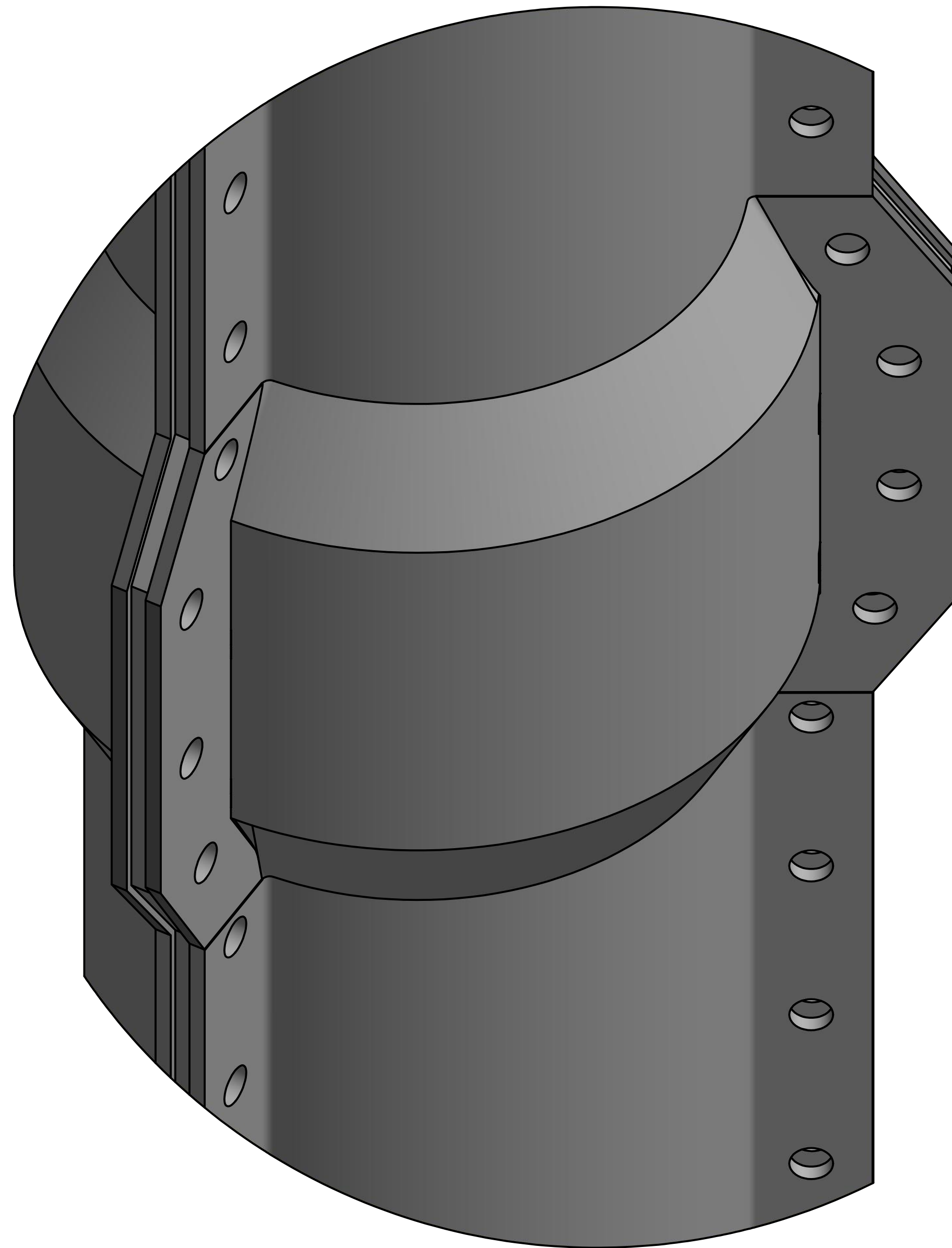
4

2

1



PILECAPINC.COM
913.948.8340



Fairing Detail

US PATENT #6561736

PILECAPINC.COM ALL DIMENSIONS IN INCHES MATERIAL: REVISION DATE: 7/30/2015 PROPRIETARY AND CONFIDENTIAL