

4

3

2

1

D

D

C

C

B

B

A

A

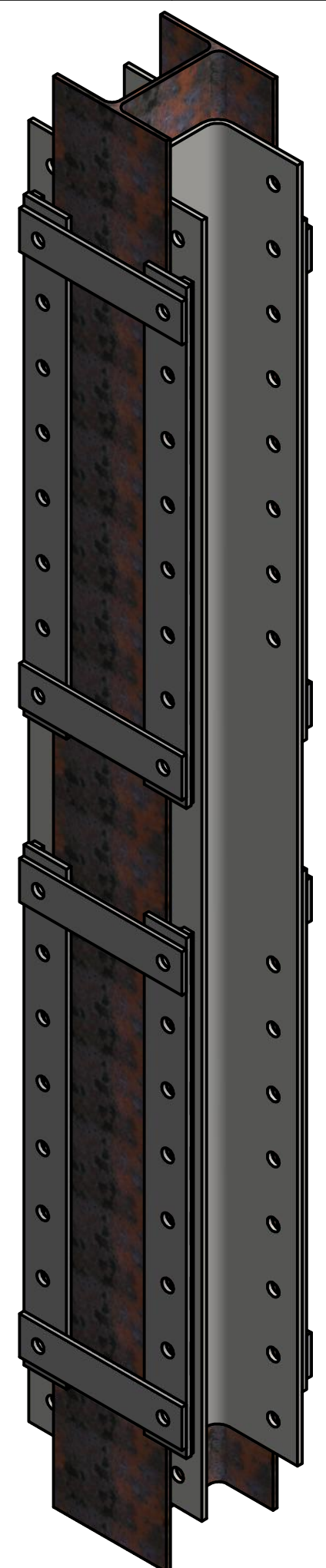
A

A

HP 12-53 Repair Jacket x 10 ft Long Bill of Materials			
Part	Per Jacket	Jacket QTY	Total Ordered
Bent Plate 12-53 L8ft	2	6	12
Friction Coupler 12-53	8	6	48
Cross Bar 12	8	6	48
A325 1" DIA x 3.5" L	48	6	288
A325 1" DIA x 4" L	16	6	96
A563 Heavy Hex Nut	64	6	384
F436 Washer	128	6	768



PILECAPINC.COM
913.948.8340



US Patent Number 6561736 B1

4

3

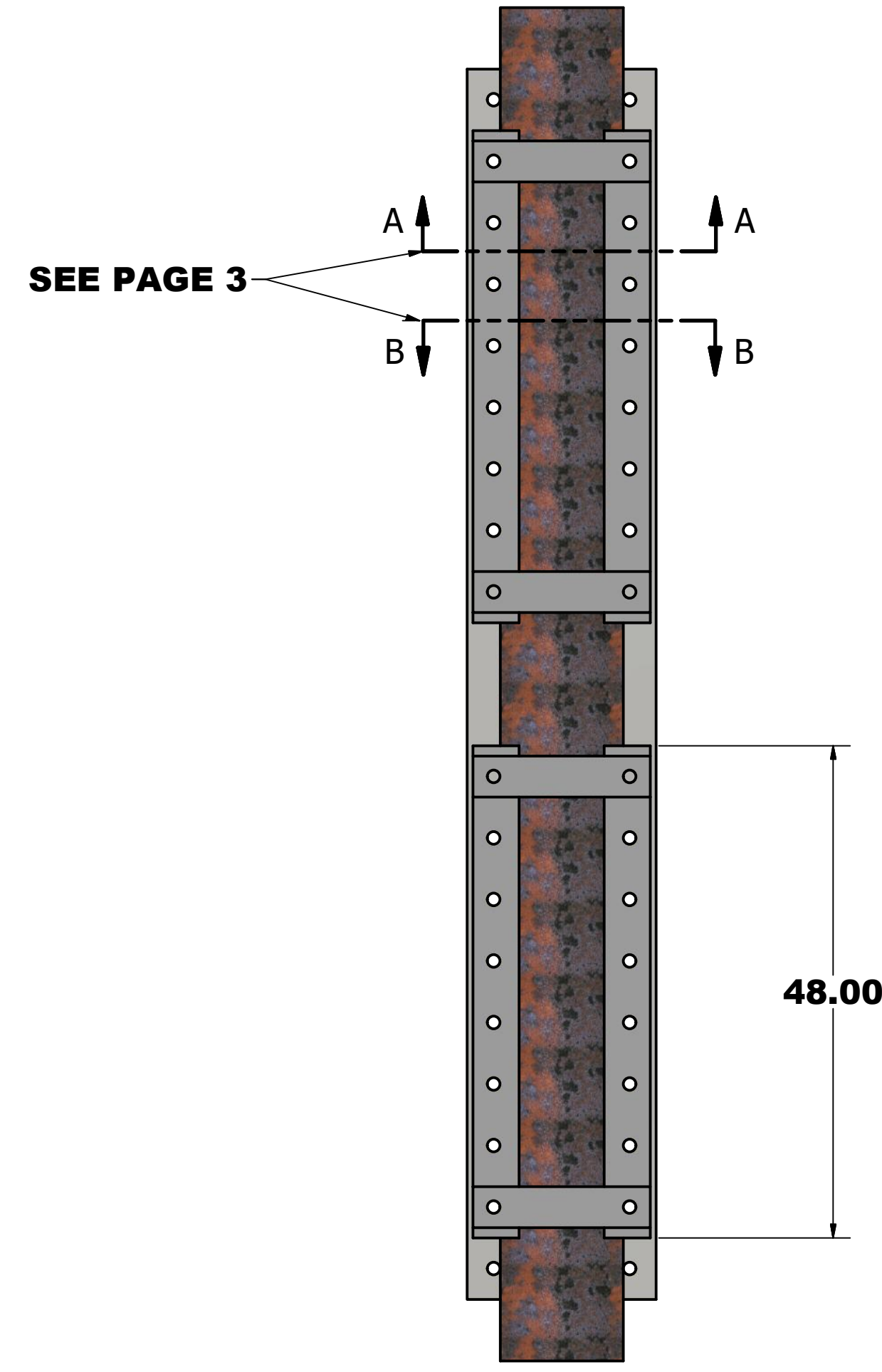
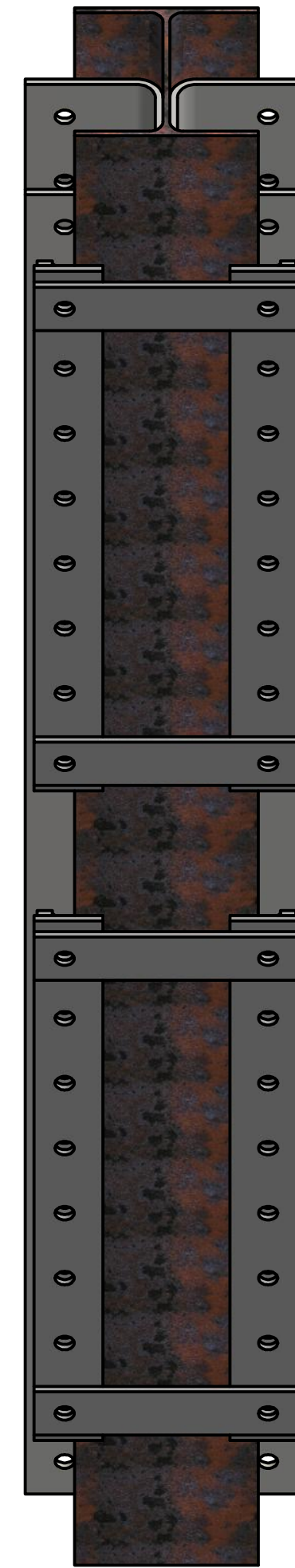
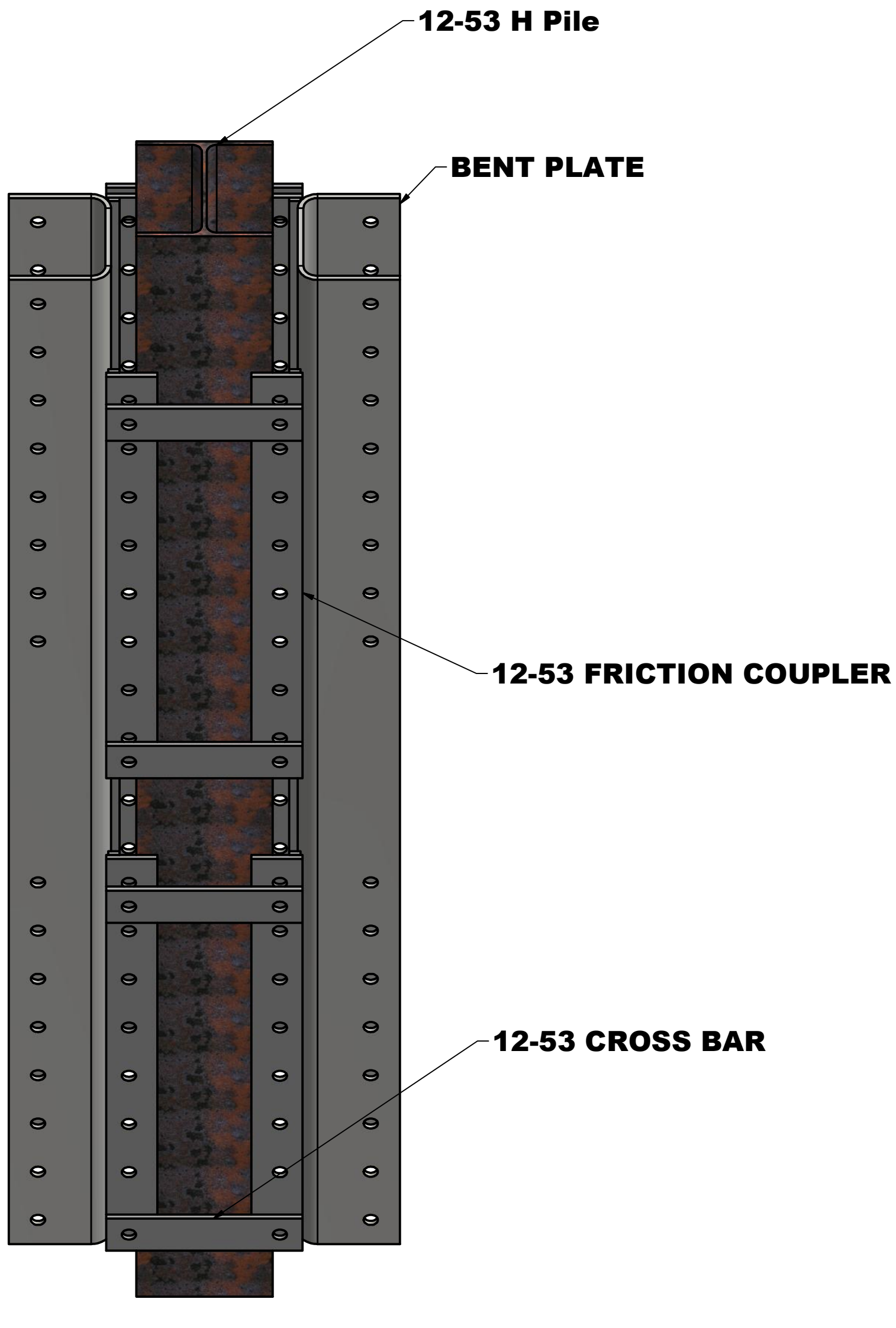
4

2

1



PILECAPINC.COM
913.948.8340



Notes:

- Prior to installation, all affected pile surfaces shall be cleaned of marine growth, mud, rust, mill scale and any other material which might prevent proper seating of jacket to the pile.
- Fasteners excluded for clarity

HP 12-53

PILECAPINC.COM ALL DIMENSIONS IN INCHES MATERIAL:

REVISION DATE: 5/25/2016

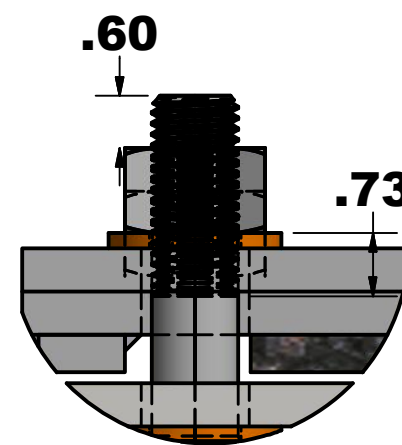
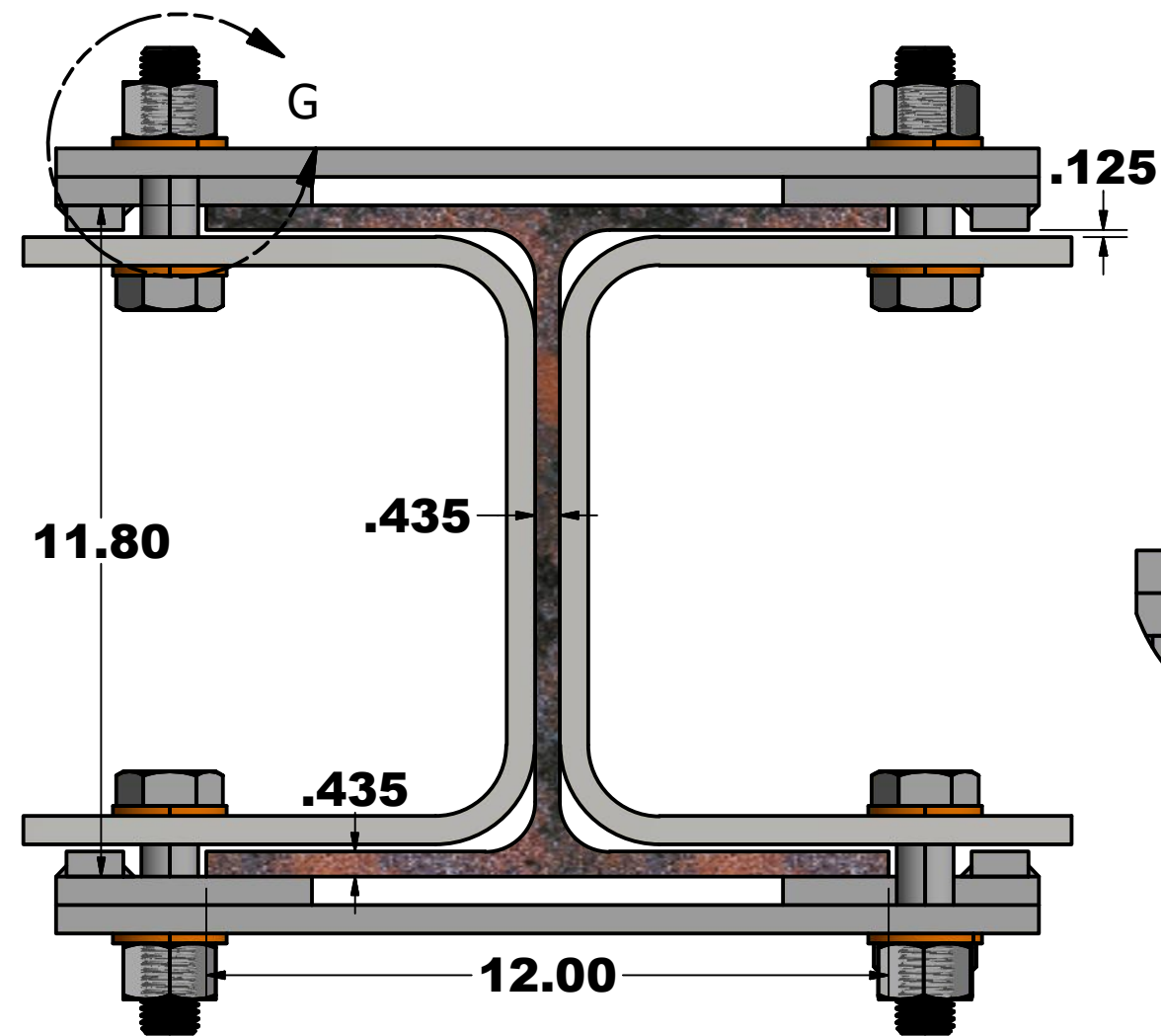
US Patent Number 6561736 B1

PROPRIETARY AND CONFIDENTIAL

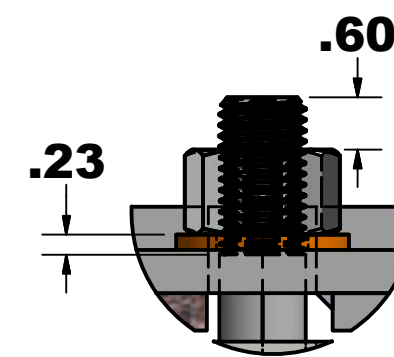


PILECAPINC.COM
913.948.8340

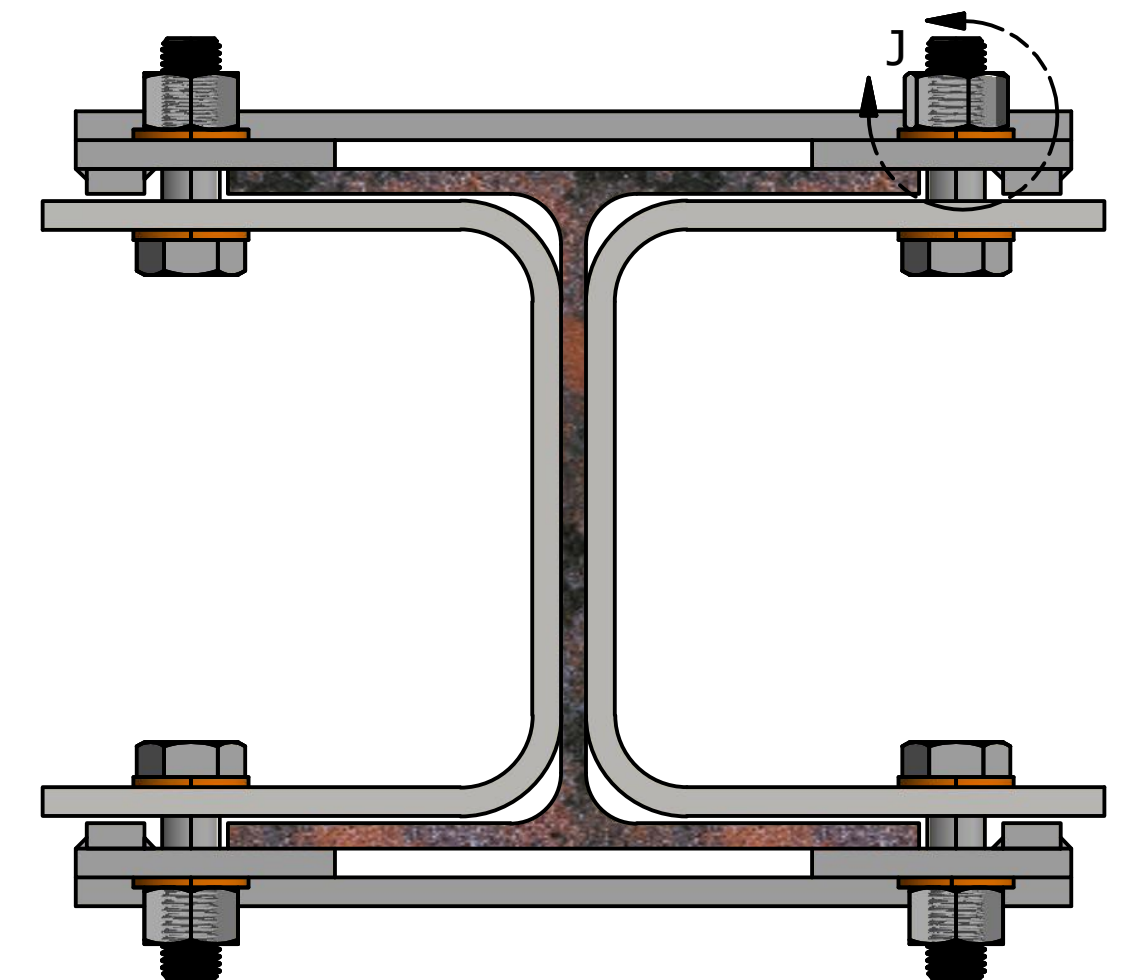
Section Properties	Ixx (in ⁴)	Iyy (in ⁴)
12-53 Repair Jacket (Excluding friction coupler & cross bar)	508	527
12-53 Base H-Pile	393	127



DETAIL G
SCALE .45 : 1



DETAIL J
SCALE 0.45 : 1



SECTION A HARDWARE SUMMARY:

- 1" DIA, 4" LONG HDG A325 HEX BOLT WITH HEAVY HEX NUT (A563)
- 2X 1" HDG F436 FLAT WASHER PER BOLT
- PRETENSION A325 TO 51-61 kips USING STAR PATTERN
- 16X 4" BOLT ASSEMBLIES PER PILE

SECTION B HARDWARE SUMMARY:

- 1" DIA, 3.5" HDG A325 HEX BOLT WITH HEAVY HEX NUT (A563)
- 2X 1" HDG F436 FLAT WASHER PER BOLT
- PRETENSION A325 TO 51-61 kips USING STAR PATTERN
- 48X 3.5" BOLT ASSEMBLIES PER PILE